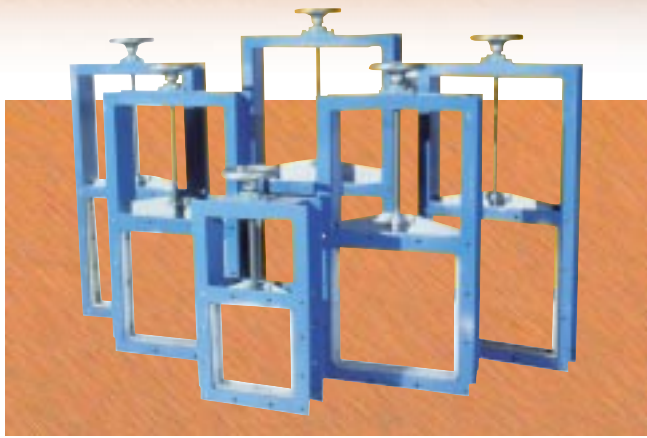
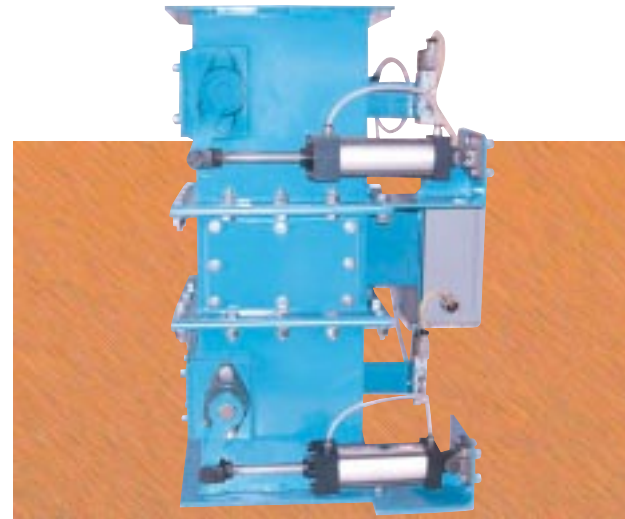


## OTHER PRODUCTS



The ACS MAINTENANCE SLIDE GATE is an economical means to shut off material flow during system repairs. Available in sizes: 6x6 - 8x8 - 10x10 - 12x12 - 14x14 - 16x16 - 18x18 - 22x22 - 26x26 - 30x30. ACS also fabricates custom designs. The ACS Maintenance slide gates feature: CS channel construction, Stainless Steel Blade, Stainless Steel Transport Screw, Teflon Packing seals, Polyurethane or Bronze slider guides. It is available with handcrank, handwheel or air cylinder operators.

ACS DOUBLE FLAP VALVES are suitable for discharging dry bulk materials from cyclones, filters, hoppers etc. These valves are suitable for pressure differentials up to 20 inches of W.G. The valve consists of a two-flapper design connected to counterweights, which can be operated by a motor driven cam or pneumatic actuator assembly. The flapper blade is of steel construction design to insure optimum sealing. Quick release access ports in housing are standard for inspection, cleaning or replacing parts. Sizes available are 8, 10 and 12 inches with square inlets/outlets. Fabricated transitions available to suit special flange sizes/patterns. ACS double flap valves can be fabricated in mild steel or stainless steel construction.

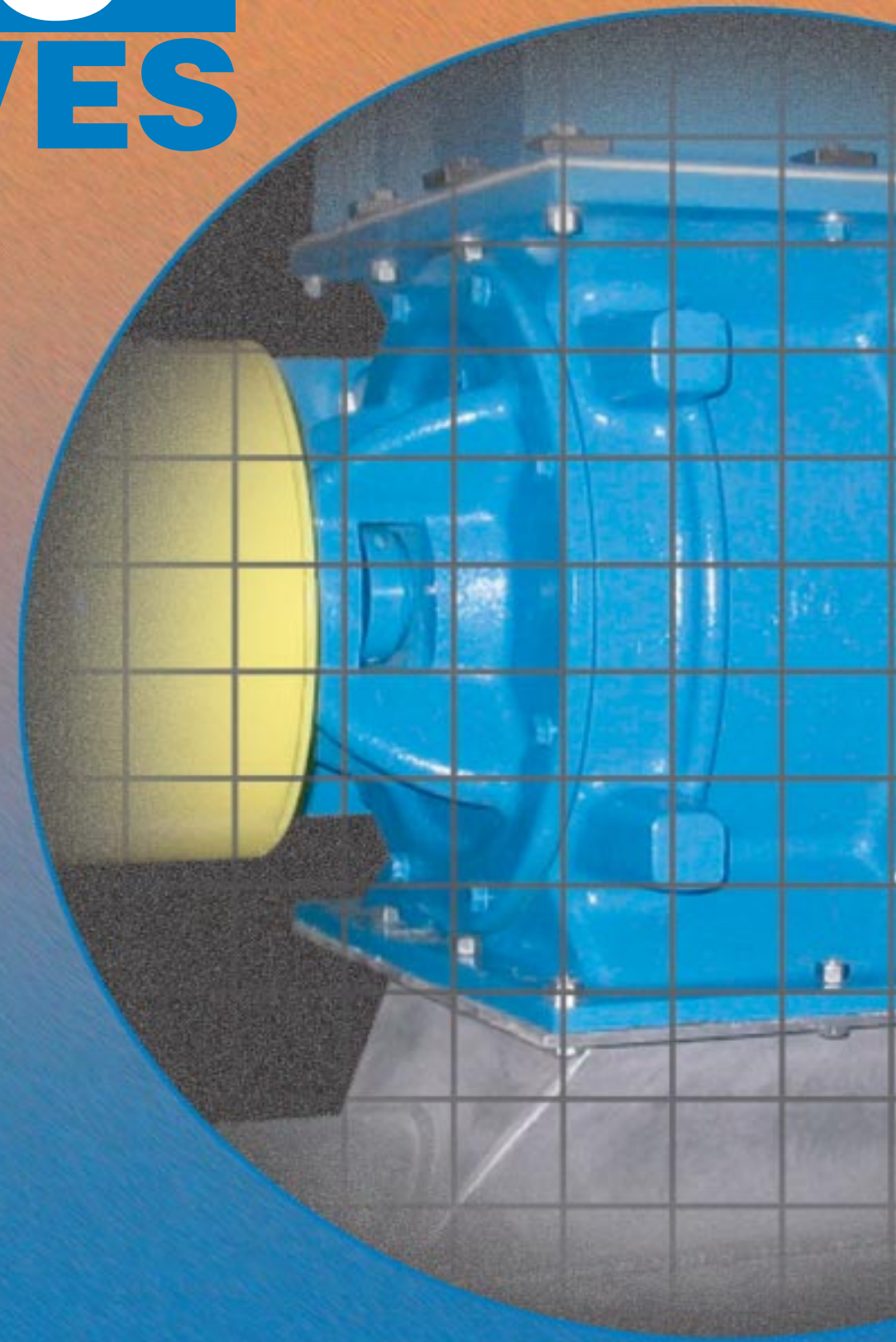


ACS DIVERTER VALVES are suitable for use in the bulk handling field to re-route powders, pellets or granular materials from one discharge point to another. ACS Diverter Valves are of fabricated mild steel construction. The internal flap is designed and manufactured to insure there is an adequate seal to the non-operational end. The flapper assembly is mounted on the main shaft, which is supported by two 4-bolt flanged ball bearings. ACS Diverter Valves can be equipped with a manual operated action handle or pneumatically operated by an air actuator. Manufactured in 3 basic sizes 8", 10" and 12" with 60 degree outlets. Divert angles can be changed to suit the application and the product being handled. 3-way diverter valves are available.

ACS Controls all aspects of manufacturing from Foundry and Machining through final assembly. Our quality control insures your equipment will arrive as you have specified.

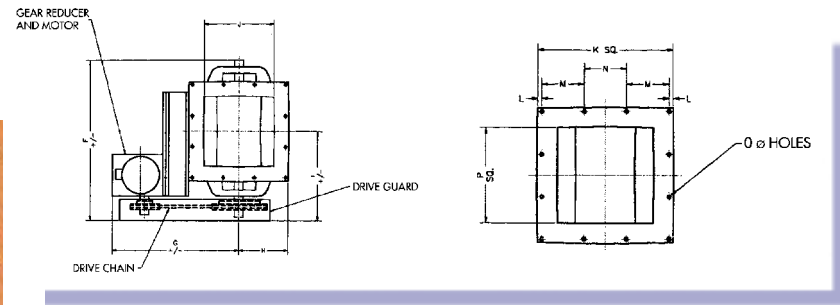
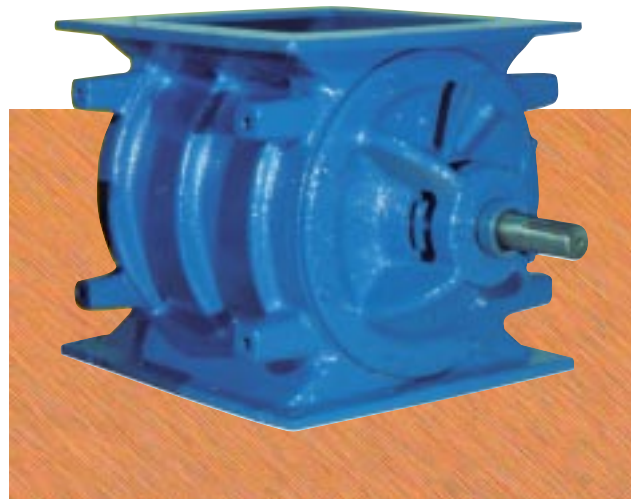
ACS VALVES - 611 Argyle St. N., Caledonia, ON N3W 1M1

# ACS VALVES



ACS Rotary Airlock Valves and Feeders  
For Pneumatic Conveying and Bulk Material Handling

CI ROTARY AIRLOCK VALVE



FEATURES OF THE "CI" AIRLOCK

- 10 available sizes (see General Arrangement Type CI Rotary Airlock specification chart on page 2)
- Dependable effective design • Rugged heavy duty design
- Machined close tolerance to maximize sealing performance
- Unique shaft seal design (less maintenance) models

CI 8X8 ROTARY AIRLOCK VALVE with shallow pocket rotor

VALVE OPTIONS

- Housing vent ports
- Surge hoppers
- Closed end rotors
- Shear plate deflectors
- Teflon coated rotors
- Metering style rotors
- Housing inspection panels
- Hardened steel rotor tips
- Rotor pocket air purges
- Special drive packages
- Packing gland type seal assemblies
- Adjustable hardened steel rotor tips
- Furnished in stainless steel construction
- Elevated temperature design up to 500°F
- Reduced volume/radius pocket rotors
- Adjustable stainless steel, brass, ni-hard or polyurethane tip

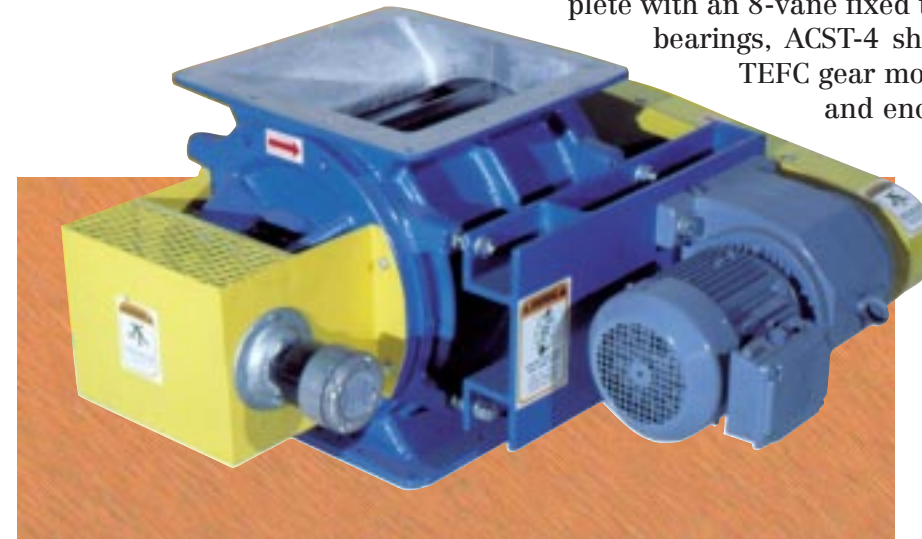


- Hard chrome bore and endplates
- Motion speed switch assemblies
- Blow through adaptors

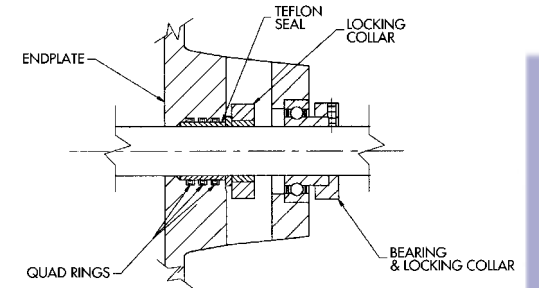
CI 12X12 ROTARY AIRLOCK VALVE

complete with drive package and speed switch assembly

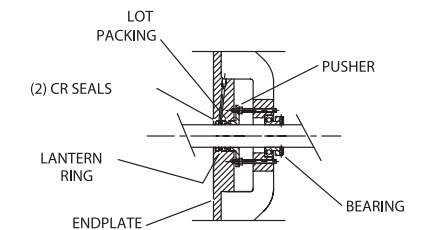
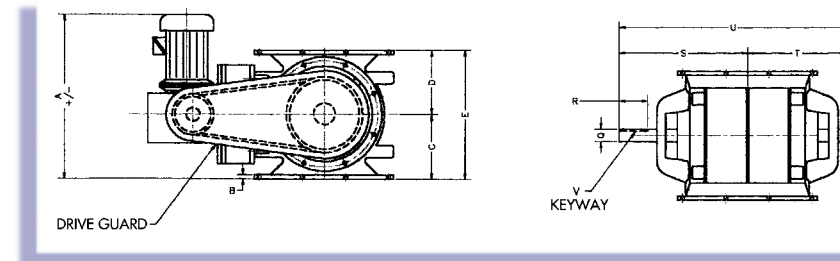
ACS Type CI Rotary Airlock Valve/Feeders are ideally suited for pressure or vacuum pneumatic conveying systems up to 15psi. Standard construction consists of a rugged heavy duty cast iron housing and endplates, complete with an 8-vane fixed tip, fabricated steel rotor assembly, outboard bearings, ACST-4 shaft seal assembly, outboard bearings and a TEFC gear motor drive package complete with chain drive and enclosed guard.



CI valves/feeders are equipped with unique ACST-4 shaft seals, which provide static and dynamic sealing characteristics resulting in superior sealing capabilities.



This seal is designed to provide a long lasting seal, requiring little maintenance. These versatile airlocks can be equipped with many features to accommodate abrasive or other-wise difficult materials. ACS also fabricates other valve sizes with rectangular and other non-standard inlets.



GENERAL ARRANGEMENT TYPE CI ROTARY AIRLOCK

VALVE	A	B	C	D	E	F	G	H	I	J	K	L	M	N	O	P	Q	R	S	T	U	V	REV. 100%	CLEARANCE
6 x 6	20	1/2	4 15/16	4 15/16	9 7/8	20	18 3/4	5 1/2	11	6	11	3/4	4 3/4	///	7/16	6	1 1/2	1 3/4	9 3/4	9	18 3/4	1/4 x 1/8	0.10	.004-.007
8 x 8	21 1/4	1/2	5 1/4	5 1/4	10 1/2	20	18 3/4	5 1/2	14 1/4	8	12	1/2	3 1/2	4	7/16	8	1 1/2	3 1/4	13 3/4	9 3/4	23	3/8 x 3/16	0.20	.004-.007
10 x 10	22 1/2	1/2	6 3/8	6 3/8	12 3/4	27	20 1/2	7 3/8	15	10	14 3/4	5/8	4 1/2	4 1/2	7/16	10	1 1/2	3 1/4	14 1/4	10 3/4	25	3/8 x 3/16	0.40	.004-.007
12 x 12	27 1/2	1/2	7 3/4	7 3/4	15 1/2	28 1/2	22	8 1/2	16 3/8	12	17	5/8	5 1/4	5 1/4	7/16	12	1 1/2	3 1/4	15 3/8	12 1/8	27 3/4	3/8 x 3/16	0.75	.004-.007
14 x 14	28	1/2	9 1/2	9 1/2	19	31	24	9	17 1/2	14	18	3/4	5 1/2	5 1/2	7/16	14	1 15/16	3 1/4	16 3/4	13 1/2	30 1/4	1/2 x 1/4	1.10	.004-.007
16 x 16	30 1/4	1/2	9 3/4	9 3/4	19 1/2	34	28 3/4	10	18	16	20	3/4	6 1/8	6 1/4	7/16	16	1 15/16	3 1/4	17 1/2	15 1/2	33	1/2 x 1/4	1.40	.004-.007
18 x 18	32 1/2	3/4	13	13	26	39	28 3/4	11 1/2	22	18	23	3/4	5 3/8	5 3/8	5/8	18	2 7/16	3 1/2	21 1/4	17 1/2	38 3/4	1/2 x 1/4	2.70	.012-.016
22 x 22	34 1/4	3/4	15	15	30	43 1/2	30 3/4	14	24	22	28	1	6 1/2	6 1/2	5/8	22	2 7/16	3 1/2	23 3/4	19 1/2	42 3/4	1/2 x 1/4	4.60	.012-.016
26 x 26	36	3/4	18	18	36	50 1/4	31 5/16	16	26 11/16	26	32	1	6	6	5/8	26	2 15/16	3 1/2	25 1/2	23 1/2	49	1/2 x 1/4	9.0	.012-.016
30 x 30	28 1/16	3/4	22	22	44	56 3/4	40 9/16	20	///	33	40	1 1/4	6	6	5/8	30	3 7/16	3 1/2	29 3/8	26 3/8	56	3/4 x 3/8	16.60	.012-.016

# TYPE MD AIRLOCK

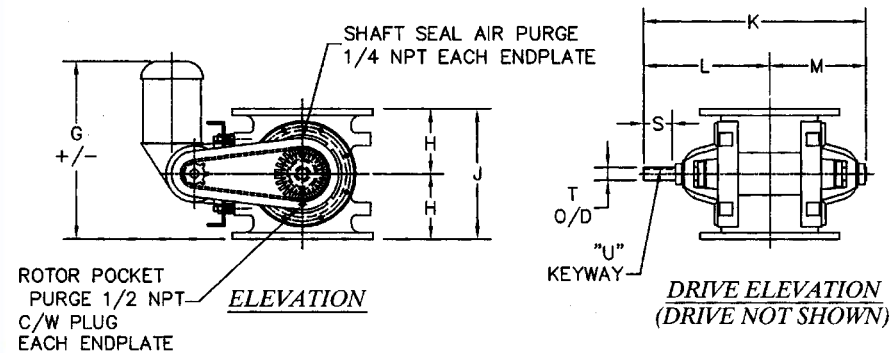
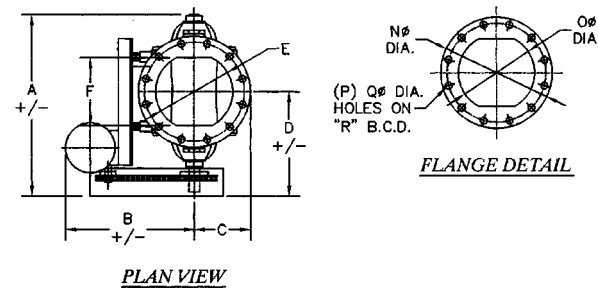
## TYPE MD (MULTI-DUTY) AIRLOCKS

The ACS Type MD ("Multi-Duty") Rotary Airlock Valve/Feeders is ideally suited for pressure or vacuum pneumatic conveying systems up to 15 psi. Standard construction consists of a rugged heavy duty cast iron housing and end plates, complete with a 8-vane fixed tip, fabricated steel rotor assembly, outboard bearings, ACST-4 shaft seal assembly and a TEFC gear motor drive package complete with chain drive and enclosed guard.



### FEATURES OF THE MD AIRLOCK

- 5 available sizes
- Dependable effective design
- #150 flange style drilling pattern on inlet/outlet flanges
- Unique shaft seal design (less maintenance)
- Machined close tolerance to maximize performance



GENERAL ARRANGEMENT TYPE MD AIRLOCK

SIZE	A	B	C	D	E	F	G	H	J	K	L	M	N	O	P	Q	R	S	T	U	C.F.R.	WT.
6	23 <sup>3</sup> / <sub>4</sub>	14 <sup>9</sup> / <sub>16</sub>	5 <sup>1</sup> / <sub>2</sub>	12 <sup>7</sup> / <sub>8</sub>	6 <sup>1</sup> / <sub>4</sub>	6	18 <sup>1</sup> / <sub>4</sub>	5 <sup>5</sup> / <sub>16</sub>	10 <sup>5</sup> / <sub>8</sub>	21	12 <sup>1</sup> / <sub>2</sub>	8 <sup>7</sup> / <sub>8</sub>	11	6 <sup>1</sup> / <sub>4</sub>	8	7 <sup>1</sup> / <sub>8</sub>	9 <sup>1</sup> / <sub>2</sub>	3 <sup>3</sup> / <sub>4</sub>	1 <sup>1</sup> / <sub>2</sub>	3 <sup>5</sup> / <sub>8</sub> x 3 <sup>1</sup> / <sub>16</sub>	0.10	250 lbs
8	24	17 <sup>1</sup> / <sub>16</sub>	6 <sup>3</sup> / <sub>4</sub>	14 <sup>3</sup> / <sub>16</sub>	9	9	21 <sup>11</sup> / <sub>16</sub>	6 <sup>1</sup> / <sub>4</sub>	12 <sup>1</sup> / <sub>2</sub>	23	13 <sup>1</sup> / <sub>4</sub>	9 <sup>3</sup> / <sub>4</sub>	13 <sup>1</sup> / <sub>2</sub>	9	8	1	11 <sup>3</sup> / <sub>4</sub>	3 <sup>1</sup> / <sub>4</sub>	1 <sup>1</sup> / <sub>2</sub>	3 <sup>5</sup> / <sub>8</sub> x 3 <sup>1</sup> / <sub>16</sub>	0.20	300 lbs
10	26 <sup>1</sup> / <sub>8</sub>	18 <sup>1</sup> / <sub>16</sub>	8	15 <sup>1</sup> / <sub>16</sub>	11	9 <sup>3</sup> / <sub>4</sub>	20 <sup>7</sup> / <sub>16</sub>	7 <sup>1</sup> / <sub>2</sub>	15	25 <sup>1</sup> / <sub>2</sub>	14 <sup>7</sup> / <sub>16</sub>	11 <sup>1</sup> / <sub>16</sub>	16	11	12	1	14 <sup>1</sup> / <sub>4</sub>	3 <sup>1</sup> / <sub>4</sub>	1 <sup>1</sup> / <sub>2</sub>	3 <sup>5</sup> / <sub>8</sub> x 3 <sup>1</sup> / <sub>16</sub>	0.40	375 lbs
12	29	19 <sup>9</sup> / <sub>16</sub>	9 <sup>1</sup> / <sub>2</sub>	16 <sup>7</sup> / <sub>8</sub>	13	13	24 <sup>5</sup> / <sub>8</sub>	9 <sup>3</sup> / <sub>16</sub>	18 <sup>3</sup> / <sub>8</sub>	27 <sup>3</sup> / <sub>4</sub>	15 <sup>5</sup> / <sub>8</sub>	12 <sup>3</sup> / <sub>8</sub>	19	13	12	1 <sup>1</sup> / <sub>8</sub>	17	3 <sup>1</sup> / <sub>4</sub>	1 <sup>1</sup> / <sub>2</sub>	3 <sup>5</sup> / <sub>8</sub> x 3 <sup>1</sup> / <sub>16</sub>	0.75	500 lbs
14	31 <sup>3</sup> / <sub>8</sub>	23 <sup>7</sup> / <sub>8</sub>	10 <sup>1</sup> / <sub>2</sub>	17 <sup>7</sup> / <sub>8</sub>	15	15	25 <sup>11</sup> / <sub>16</sub>	10 <sup>1</sup> / <sub>4</sub>	20 <sup>1</sup> / <sub>2</sub>	30 <sup>1</sup> / <sub>4</sub>	15 <sup>3</sup> / <sub>4</sub>	13 <sup>1</sup> / <sub>2</sub>	21	15	12	1 <sup>1</sup> / <sub>8</sub>	18 <sup>3</sup> / <sub>4</sub>	3 <sup>1</sup> / <sub>4</sub>	1 <sup>15</sup> / <sub>16</sub>	1 <sup>1</sup> / <sub>2</sub> x 1 <sup>1</sup> / <sub>4</sub>	1.10	750 lbs
16	34 <sup>1</sup> / <sub>4</sub>	25 <sup>1</sup> / <sub>16</sub>	11 <sup>3</sup> / <sub>4</sub>	18 <sup>3</sup> / <sub>4</sub>	15 <sup>3</sup> / <sub>4</sub>	15 <sup>3</sup> / <sub>4</sub>	25 <sup>15</sup> / <sub>16</sub>	11 <sup>3</sup> / <sub>4</sub>	23	34	18	16	23 <sup>1</sup> / <sub>2</sub>	15 <sup>3</sup> / <sub>4</sub>	16	1 <sup>1</sup> / <sub>8</sub>	21 <sup>1</sup> / <sub>4</sub>	3 <sup>1</sup> / <sub>4</sub>	1 <sup>15</sup> / <sub>16</sub>	1 <sup>1</sup> / <sub>2</sub> x 1 <sup>1</sup> / <sub>4</sub>	1.39	850 lbs

# AERO-FLOW FEEDER

## AERO-FLOW FEEDER

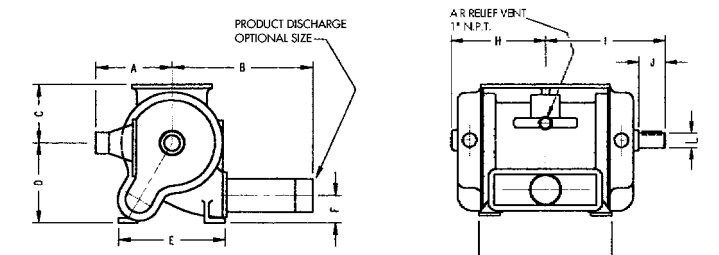
The ACS "AF" feeders offer trouble-free service when handling most types of dry bulk materials (including difficult materials such as sugar). High pressure filtered air enters the hollow end bells on both ends and then enters the feeder from both sides near the feeder pockets where the product is discharged. This double inlet action of air helps to thoroughly mix the product with the conveying air and sweeps each pocket clean as it reaches the discharge point. This action increases the volumetric efficiency of the feeder. Standard construction is all cast iron with fabricated mild steel 10-blade rotor. Blades can be furnished with special tipping materials or bevelled tips. Valves can be also furnished in stainless steel. Air relief vent is standard.



## AERO-FLOW FEEDER VALVE (ENDPLATE)



The high pressure air in the hollow end bells keeps the product from coming in contact with the shaft bearings of the feeder, for smoother operation and less maintenance.



\* For Flange Dimensions Please Contact ACS

### OTHER DETAILS

- 4 models available
- Compact design
- Shaft/Bearings Air Sealed for longer life
- "Aero-Flow" design highly effective at aeration of material
- "Aero-Flow" design increases volumetric efficiencies

GENERAL ARRANGEMENT TYPE "AERO-FLOW" FEEDER VALVE

SIZE	CAP. IN CU. FT. PER REV	A	B	C	D	E	F	G	H	I	J	K	L	MOTOR HP.	WT.
AF-A	0.32	9 <sup>3</sup> / <sub>4</sub>	14 <sup>15</sup> / <sub>16</sub>	7 <sup>1</sup> / <sub>2</sub>	10	13 <sup>3</sup> / <sub>8</sub>	3 <sup>1</sup> / <sub>4</sub>	20 <sup>7</sup> / <sub>16</sub>	8 <sup>7</sup> / <sub>16</sub>	12	3 <sup>9</sup> / <sub>16</sub>	11 <sup>1</sup> / <sub>4</sub>	1 <sup>7</sup> / <sub>8</sub>	3/4	400
AF-B	0.60	9 <sup>3</sup> / <sub>4</sub>	17 <sup>15</sup> / <sub>16</sub>	7 <sup>1</sup> / <sub>2</sub>	10	13 <sup>3</sup> / <sub>8</sub>	3 <sup>1</sup> / <sub>4</sub>	27 <sup>5</sup> / <sub>16</sub>	11 <sup>7</sup> / <sub>8</sub>	15 <sup>7</sup> / <sub>16</sub>	3 <sup>9</sup> / <sub>16</sub>	18	1 <sup>7</sup> / <sub>8</sub>	1	510
AF-C	1.33	11 <sup>3</sup> / <sub>8</sub>	20 <sup>15</sup> / <sub>16</sub>	9 <sup>1</sup> / <sub>2</sub>	11 <sup>3</sup> / <sub>8</sub>	18 <sup>3</sup> / <sub>4</sub>	3 <sup>5</sup> / <sub>8</sub>	30 <sup>15</sup> / <sub>16</sub>	13 <sup>11</sup> / <sub>16</sub>	17 <sup>1</sup> / <sub>4</sub>	3 <sup>9</sup> / <sub>16</sub>	16 <sup>1</sup> / <sub>8</sub>	2 <sup>3</sup> / <sub>8</sub>	1	700
AF-D	2.29	11 <sup>3</sup> / <sub>8</sub>	31 <sup>15</sup> / <sub>16</sub>	9 <sup>1</sup> / <sub>2</sub>	11 <sup>3</sup> / <sub>8</sub>	18 <sup>3</sup> / <sub>4</sub>	3 <sup>5</sup> / <sub>8</sub>	42 <sup>11</sup> / <sub>16</sub>	19 <sup>7</sup> / <sub>16</sub>	23 <sup>1</sup> / <sub>4</sub>	3 <sup>9</sup> / <sub>16</sub>	27 <sup>3</sup> / <sub>8</sub>	2 <sup>3</sup> / <sub>8</sub>	1 <sup>1</sup> / <sub>2</sub>	1015

# FLEX-TIP ROTARY VALVES

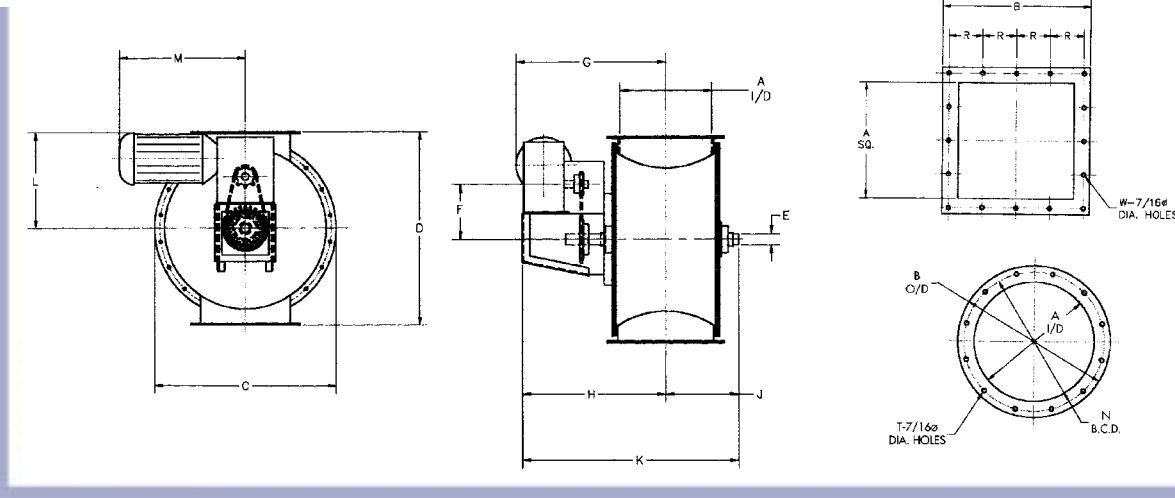
## FLEX-TIP ROTARY VALVE

The ACS FT Valves are suitable for use as an airlock, pneumatic feeders on conveying systems or as product metering devices. They can effectively maintain their air seal at pressure or vacuum up to 18 W.G. FT Valves have been used in a wide range of industries: chemical, metallurgical, food, wood products and grain/feed.

These premium quality fabricated valves feature a one-piece full pocket, double wiper seal design. This special design creates the best air seal possible with flex tip rotors.

FT Valves are available in sizes ranging from 6" to 30" and can be fabricated with square or round inlets/outlets. FT valves can be fabricated in mild steel or stainless steel construction. Standard flex tip material is neoprene, optional materials available are EPDM, white neoprene, Buna N and polyurethane.

Quick deliveries on sizes 8", 10" and 12" valves.



GENERAL ARRANGEMENT TYPE FT VALVE

A	B	C	D	E	F	G	H	J	K	L	M	N	R	T	W	HP	WT	C.F.R.	MODEL
6	9 1/4	13 1/4	15	1 3/16	6 1/16	15 1/8	13 7/8	6	19 7/8	12 1/2	17	8	2 5/8	8	12	1/3	180	0.234	FT6
8	11 1/4	17 1/4	19	1 1/4	6 3/16	16	14 7/8	7 1/4	22 1/8	12 1/2	17	10	3 3/8	8	12	1/3	180	0.64	FT8
10	13 1/4	21 1/4	23	1 7/16	7 1/4	17 7/16	17 1/16	8 1/4	25 5/16	13 1/2	17 1/2	12	3	12	16	1/2	230	1.34	FT10
12	15 1/4	25 1/4	27	1 7/16	7 1/4	19	18 3/16	9 1/2	27 11/16	13 1/2	17 1/2	14	3 1/2	12	16	3/4	380	2.46	FT12
16	19 1/4	33 1/4	35	1 11/16	8	23	23	11 1/2	34 1/2	14	19 1/2	18	3 5/8	16	20	1 1/2	875	6.2	FT16
20	23 3/8	41 3/8	43 3/8	2 3/16	11	24	24 1/2	14	38 1/2	18	20	22	3 11/16	24	24	3	1300	12.6	FT20
24	27 1/2	47 1/2	49 1/2	2 3/16	14 7/8	27	26 1/2	16	42 1/2	23	24	26	3 3/4	24	28	5	1850	23.0	FT24
30	33 1/2	59 1/2	61 1/2	2 3/16	n/a	22 3/8	22 3/8	18 5/8	41	29	24	32 1/8	4 1/32	32	32	5	2000	42.5	FT30

# TYPE CDC-CI ROTARY VALVE

## TYPE CDC-CI ROTARY VALVE

These precision-made valves may be used as airlocks, pneumatic conveying feeders or product metering devices. The Type CDC-CI valves are capable of handling the toughest products including abrasives such as silica and alumina and sticky substances such as sugar.

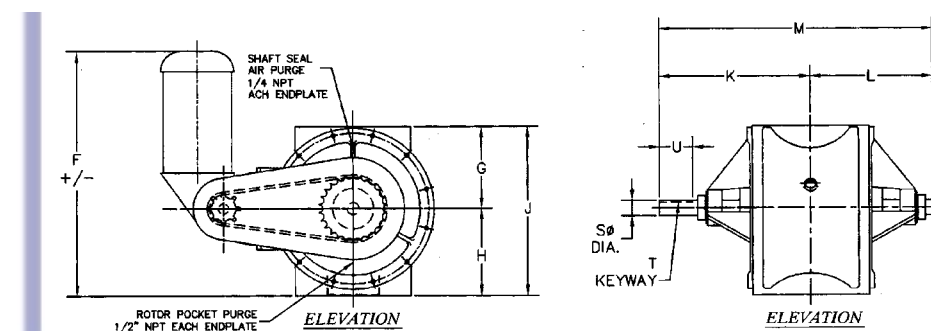
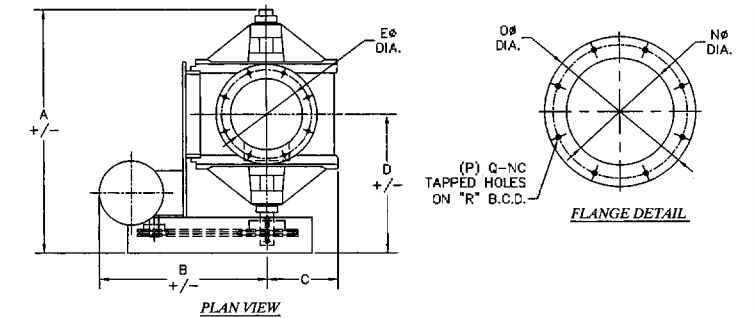
The ACS Type CDC-CI Rotary Airlock Valve is ideally suited for pressure or vacuum pneumatic conveying systems up to 15 psi.

Standard construction consists of a rugged heavy duty cast iron housing and end plates, complete with a 8-vane fixed tip, fabricated steel rotor assembly, out-board bearings, ACST-4 shaft seal assembly and a TEFC gear motor drive package complete with chain drive and enclosed guard.



### FEATURES OF THE CDC-CI VALVE

- 4 available sizes
- Dependable effective design
- Unique shaft seal design (less maintenance)
- Machined close tolerance to maximize performance
- Drop in replacement for the CARTER DAY Type "CI" Rotary Valves



GENERAL ARRANGEMENT TYPE CDC-CI ROTARY VALVE

SIZE	A	B	C	D	E	F	G	H	J	K	L	M	N	O	P	Q	R	S	T	U	C.F.R.	WT.
6	24 1/16	16 1/16	5 7/8	14 11/16	6	21 11/16	5 3/4	6 1/4	12	12 7/8	10 1/8	23	6	9 1/4	8	3/16-16 nc	8	1 1/2	3/8 x 3/16	3/4	0.28	250 lbs
8	27 3/8	18 3/16	7 7/8	15 5/8	8	23 15/16	8	8 1/2	16 1/2	14 3/4	11 3/4	26 1/2	8	11 1/4	8	3/16-16 nc	10	1 1/2	3/8 x 3/16	3/4	0.8	350 lbs
10	30 7/16	22 3/16	11	17 7/16	10	26 3/16	10	10 3/4	20 3/4	16	13	29	10	13 3/4	12	3/16-16 nc	12	1 5/8	1 1/2 x 1 1/4	3/4	1.6	800 lbs
12	32 11/16	28 3/8	13	18	12	31 1/16	12	13	25	17 11/16	14 11/16	32 3/8	12	15 1/4	12	3/16-16 nc	14	2 7/16	1 1/2 x 1 1/4	3/4	2.4	915 lbs