

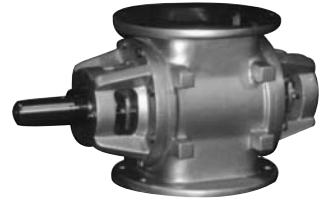
### CI ROTARY AIRLOCK VALVE

- Available in 10 sizes
- Available in cast iron/stainless steel
- Square inlet/outlet flanges
- Machined close tolerance
- SS, hardened, rubber rotor tip options



### MD (MULTI-DUTY) ROTARY AIRLOCK VALVE

- Available in 5 sizes
- Round inlet/outlet flanges
- Rugged heavy duty design
- Elevated temperature to 500 deg F
- Chrome, Teflon, Tungsten interior coatings



### DR-S ROTARY VALVE – COMPETITOR SERIES

- Available in 3 sizes
- Available in cast iron/stainless steel
- Square inlet/outlet flanges
- Foodgrade options available
- Interior coating options



### CI METRIC SERIES ROTARY VALVE

- Available in 10 sizes
- Square or Round inlet/outlet flanges
- Contains CE declaration of conformity
- Metric IP54 gearmotor with metric shaft



### MINI 19:

- Available in 2" and 3" square flange inlet/outlet
- Fabricated in mild steel or stainless steel
- Option for metring style, reduced volume, or closed end rotor
- Replaceable packing rings
- Direct drive assembly



### AF (AERO-FLOW) FEEDER

- Available in 4 sizes
- For pneumatic conveying systems
- Suited for 15 psi
- Available in cast iron or stainless steel
- Special drive packages
- Vent port standard



### FT ROTARY AIRLOCK VALVE

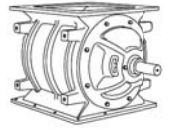
- Available in 9 sizes
- Square or Round flange inlet/outlet
- Rubber tips and sides
- Standard 6-vane design
- Available in fabricated mild steel or stainless steel
- Polyurethane, EPDM, vulkollan, nitrile tips



### DTFV ROTARY VALVE

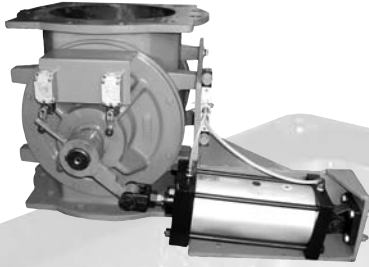
- Available in sizes 12" x 24", 12" x 36" & 12" x 48"
- Available in cast iron or stainless steel
- Can replace small screw conveyors
- Same options available as Standard CI Rotary Valve





### CI RPV ROTARY PLUG VALVE

- Available in sizes 8"-16"
- Dust tight rapid acting
- Available with air operated or manual or electric actuator
- Round or square inlet/outlet flanges
- Clam style rotor
- Elevated Temperature to 500 deg F



### S-PELLET FEEDER

- Available in sizes 6"-14"
- Non jamming design
- Round or square inlet/outlet flanges
- Standard inspection door
- Side inlet with adjustable flow control gate
- Available in cast iron or stainless steel construction



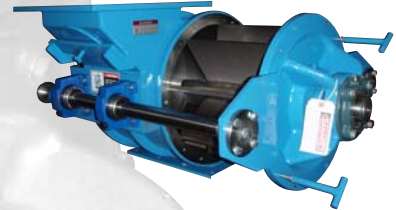
### QUICK CLEAN ROTARY VALVE

- Available in sizes 6"-16"
- Square or round inlet/outlet flange
- Endplate and rotor removal without tools for quick clean service
- Available in cast iron or stainless steel
- Same options available as CI/MD Rotary Valve



### QUICK CLEAN ON RAILS ROTARY VALVE

- Quick Clean Endplate & Rotor Removable with out tools, for cleaning on slide rail system
- Available for CI/MD/DR-S/Pellet Feeder Valves
- Adjustable tip options



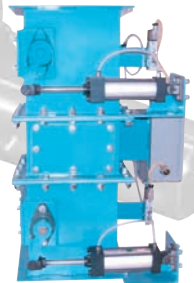
### GRAVITY DIVERTER VALVE

- Available in 7 sizes
- Square or round inlet/outlet flange
- 45 & 60 degree outlets
- Bottom access door
- Pneumatically operated
- Fabricated mild steel, stainless, or aluminum construction
- 2 or 3-way diverters



### DOUBLE FLAP VALVE

- Available in 3 sizes
- Square or round inlet/outlet flanges
- Pressure differential rated for 30" WG
- Pneumatic or gearmotor operation
- Capacity Dutchman with capacity door
- Available in gravity counterweight design



### MAINTENANCE SLIDE GATES

- Available in 10 sizes
- Round or square flange available
- Manual hand crank or pneumatic operator
- 1/4" thk 304 SS blade
- Bolted replaceable UHMW slider guides



### CDCCI ROTARY VALVE

- Available in 4 sizes
- Suited for 15 PSI
- Available in cast iron or stainless steel
- Round flanges inlet/outlet
- Housing vent port option

