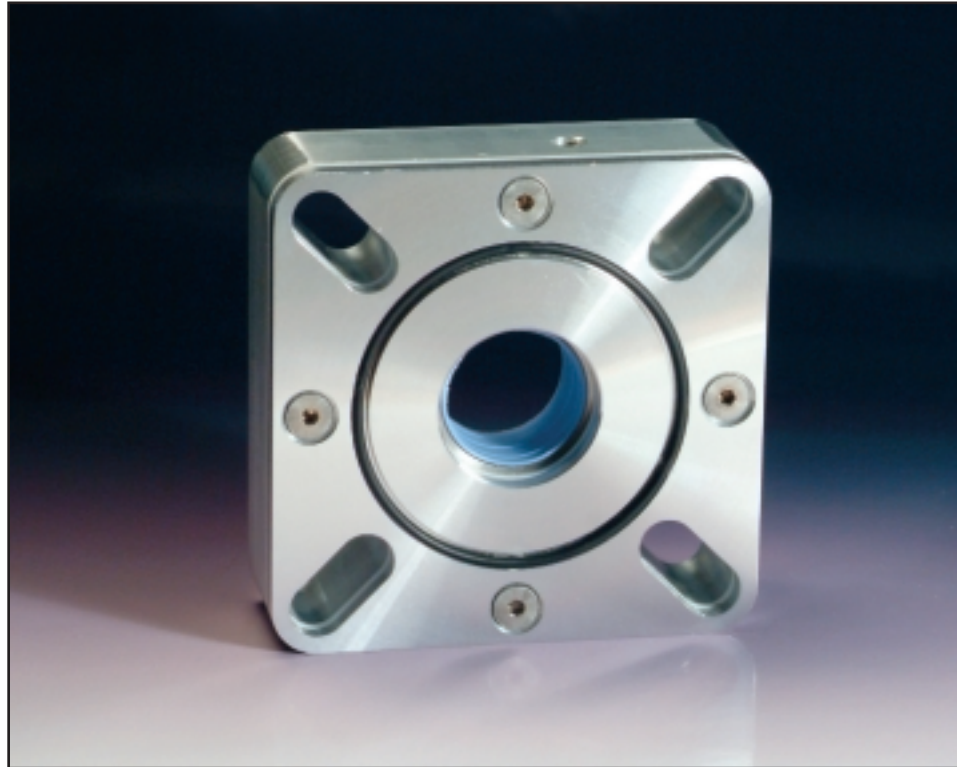
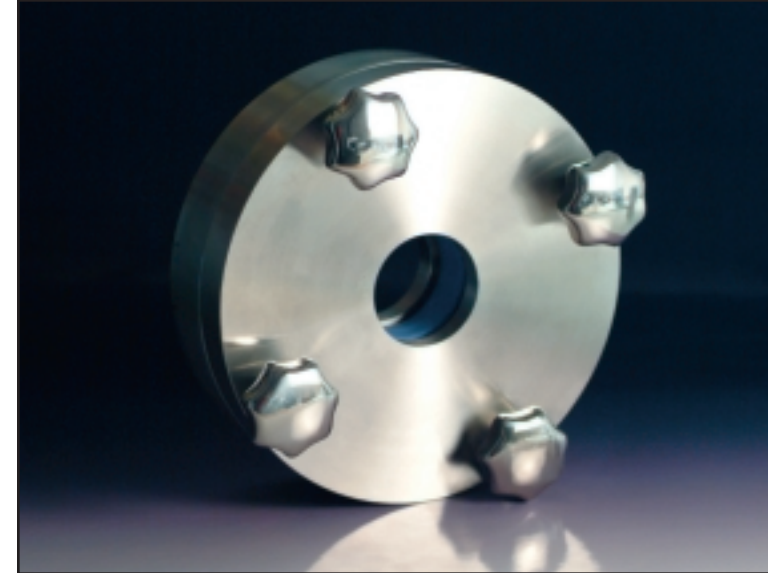


## 7500 SERIES CINCHSEAL®



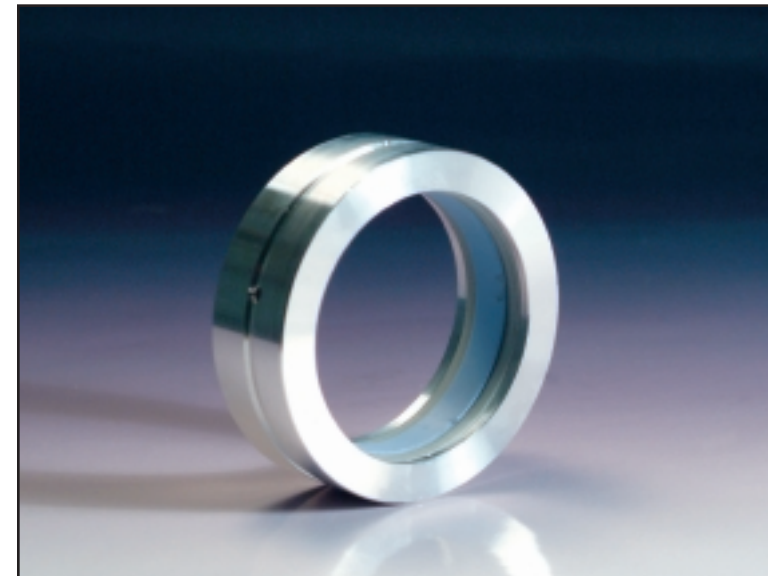
- Designed for cema screw conveyor and bulk handling equipment, the 7500 series is a self-adjusting seal.
- Temperature ranges -50f to 450f
- Bolting pattern will accommodate flange mounted bearings
- Materials available polypropylene, anodized aluminum, 316ss
- Designed to handle linear shaft growth, and axial runout
- Purge with air, 4 to 5 psig above vessel pressure, or silicone grease

## OFX SERIES CINCHSEAL®



- Designed to replace mechanical packing on ribbon blenders, mixers, pugmills
- Available in solid and split designs
- Temperature ranges -50f to 450f
- Materials available polypropylene, anodized aluminum, 316ss
- Purgeable with air, nitrogen, grease will handle vacuum
- Shown is fda sanitary design

## CARTRIDGE CINCHSEAL®



- Designed to replace lipseals on screw conveyor drive adapter plates such as dodge, linkbelt and falk
- Replaces packing on rotary air locks

Call for more information: 1-800-257-1243  
or visit our website: [www.cinchseal.com](http://www.cinchseal.com)

1-800-257-1243  
[www.cinchseal.com](http://www.cinchseal.com)

