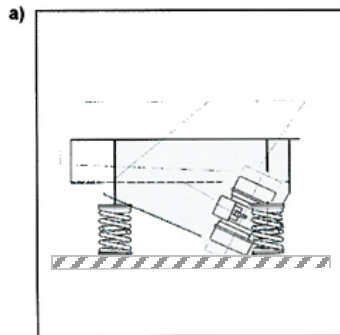


Common Feeder Mounting Methods



For small to medium vibratory feeders

Depending on the application and installation there are basic methods to mount vibratory feeders properly via rubber buffers or coils.

Fig. a) Foot or base mounting:

In this arrangement the machine is mounted from the bottom on rubber buffers or coil springs. The feeder is typically supported by the floor or on an existing structure. The springs or buffers isolate vibration from the supporting structure.

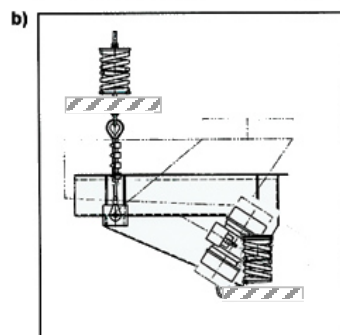


Fig. b) Foot or base support at feed end, suspended support at discharge end:

Bin discharge feeders are typically foot mounted at the feed end. At the discharge end the feeder is usually suspended from the hopper. This frees space below the feeder for other equipment.

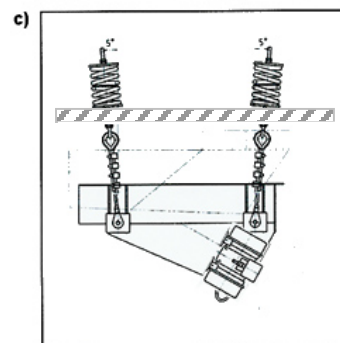


Fig. c) Suspended mount:

To install the feeder from a ceiling it is recommended to install the machine by 4 cable supports. In order to avoid 'swinging' of the machine, the cables are installed with angle of 5° in each direction, as shown in figure c). This mounting method is ideal when the floor below the machine must be clear.

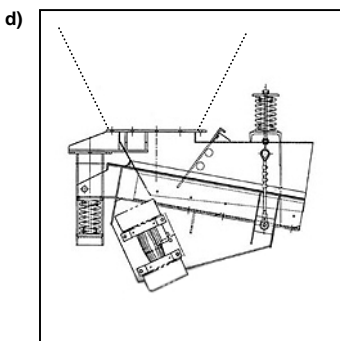


Fig. d) Integrated Chutework:

A unique mounting option for bin discharge feeders is JVI's integrated chutework package. The feeder is integrated to chutework via a special and sturdy support design and bolts directly to the hopper outlet flange. No suspension cables or support structure is required.