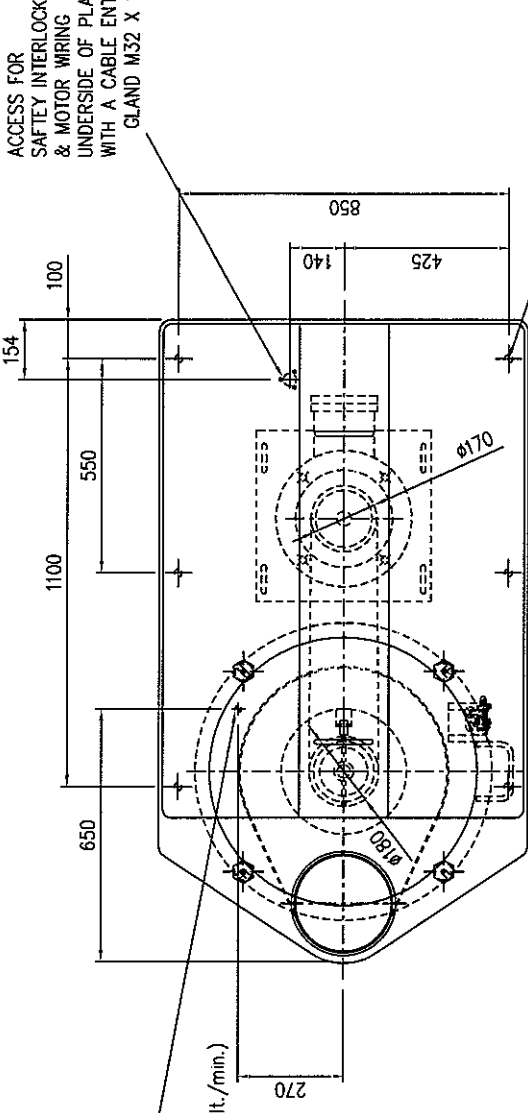


DO NOT SCALE DRAWING - IF IN DOUBT ASK

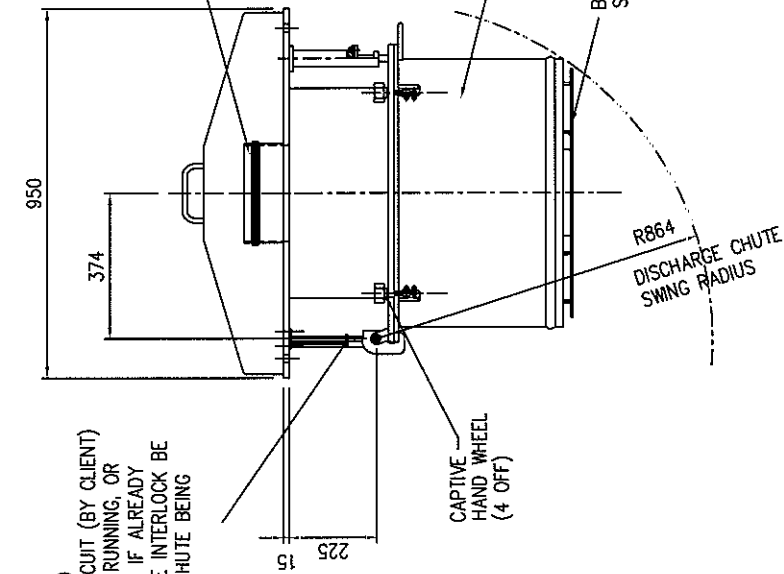
★ INLET CONNECTION MUST BE SUITABLY GUARDED BY CLIENT TO PREVENT OPERATOR ACCESS TO ROTATING PARTS IN LINE WITH RELEVANT SAFETY REGULATIONS (SEE BS EN 294/BS5304:1988).
NET WEIGHT OF M/C=380 kg

★ #6 OD PUSH-IN TUBE BULKHEAD CONNECTOR FOR SEAL PURGE, REQUIRES REGULATED SUPPLY OF CLEAN+DRY AIR/GAS(INERT) AT 0 TO 15 psig.(0 TO 1 bar.) 0.17 TO 0.7 cu.ft./min.(5 TO 20 lt./min.)

ACCESS FOR SAFETY INTERLOCK & MOTOR WIRING UNDERSIDE OF PLATE WITH A CABLE ENTRY GLAND M32 X 1P.

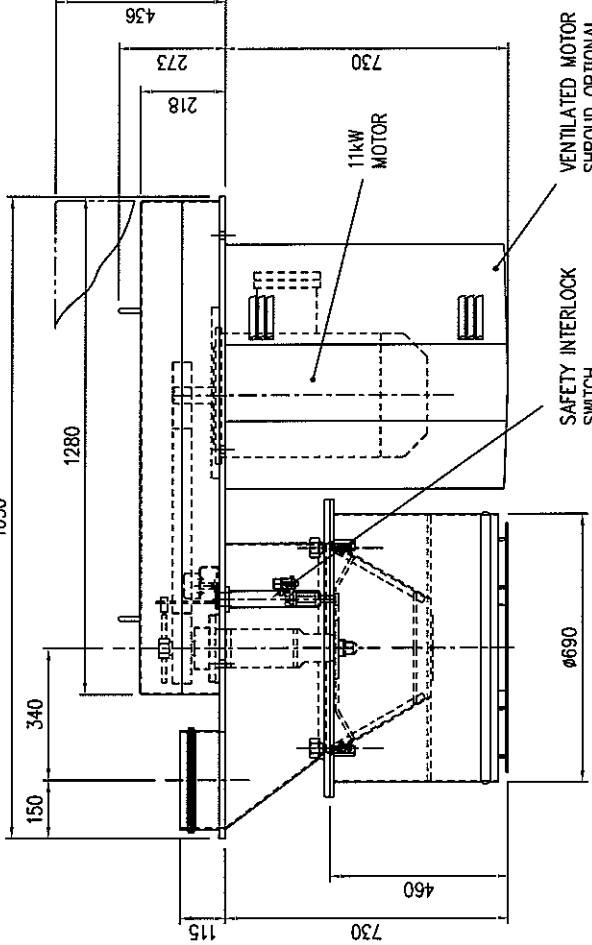


10" TRI-CLAMP SILICONE SEAL AND FREE-ISSUE FERRULE FOR WELDING TO INLET ★ BY CLIENT



DISCHARGE CHUTE SAFETY INTERLOCK MUST BE WIRED INTO MOTOR CONTROL CIRCUIT (BY CLIENT) TO PREVENT MOTOR RUNNING, OR DE-ENERGISE MOTOR IF ALREADY RUNNING, SHOULD THE INTERLOCK BE ACTUATED BY THE CHUTE BEING SWUNG OPEN.

DRIVE GUARD REMOVAL ENVELOPE



KEMUTEK GROUP

DRAWN BY: **S. HOWSE**
CHECKED BY: ---
APPROVED BY: ---

TITLE	540 CONE MILL
DRAWING No	A2 DS486
ISSUE	A
DATE	07/07/99
SCALE	1:10

Braby-Silo	
Flo-Bin	
Gardner	
KEK	
Mucon	
Tourell	

THIS DRAWING IS THE PROPERTY OF KEMUTEK GROUP LTD AND MUST NOT BE COPIED OR SHOWN TO A THIRD PARTY WITHOUT THE WRITTEN CONSENT OF THIS COMPANY. © 07/07/99